

# NOTICE BOX

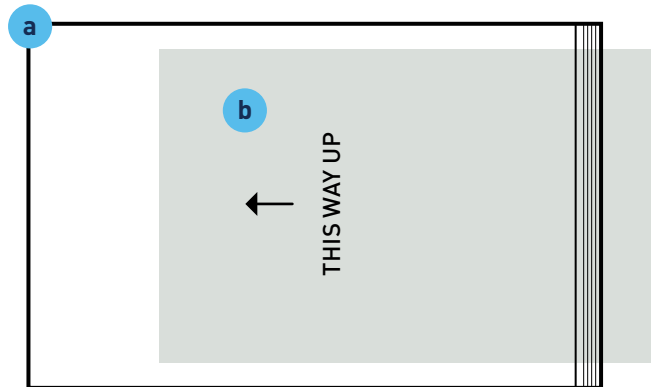
## The Professional and Secure Way to Erect Your Site Notice

### Instruction Leaflet

#### Step 1

- Place A4 size site notice into the plastic bag supplied.
- Ensure the top of the notice goes in first, and the bottom of the notice is at the zip-lock end.

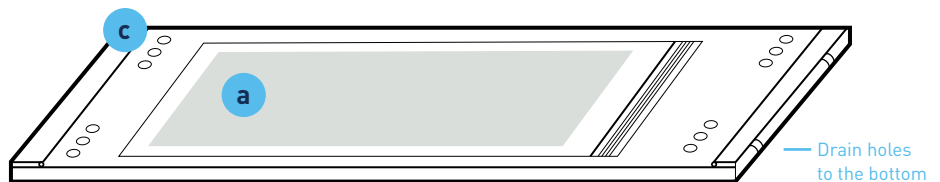
**a** Plastic Bag    **b** Site Notice



#### Step 2

- Eliminate all the air from the plastic bag prior to zipping it closed.
- Place the metal panel on a flat surface and position the notice in the centre.

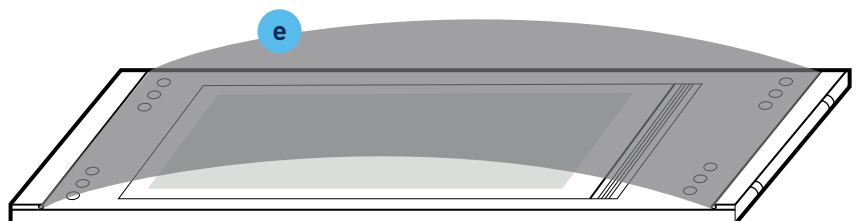
**c** Metal Enclosure



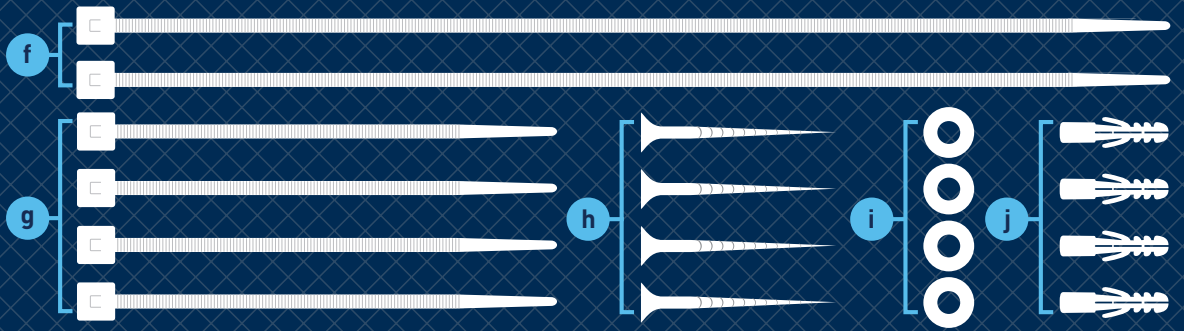
#### Step 3

- Insert the transparent perspex sheet into the metal enclosure at one end.
- Bend it slightly to insert it into the other end.

**e** Perspex Sheet

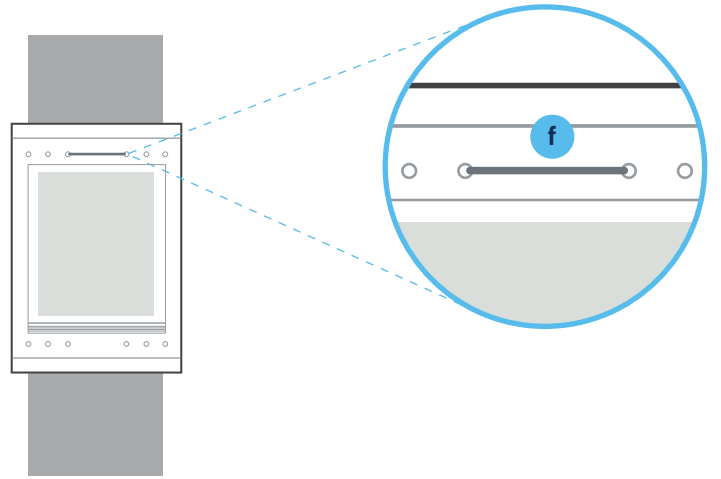


Fittings



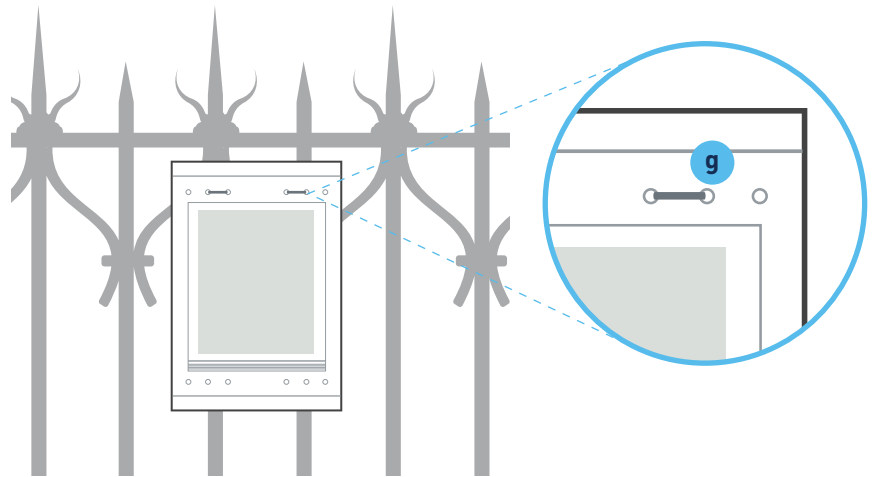
Fit to Poles

f Pole Ties



Fit to Railings & Fences

g Railing Ties



Fit to Walls / Hoardings

h Screw i Washer j Wall Plug

